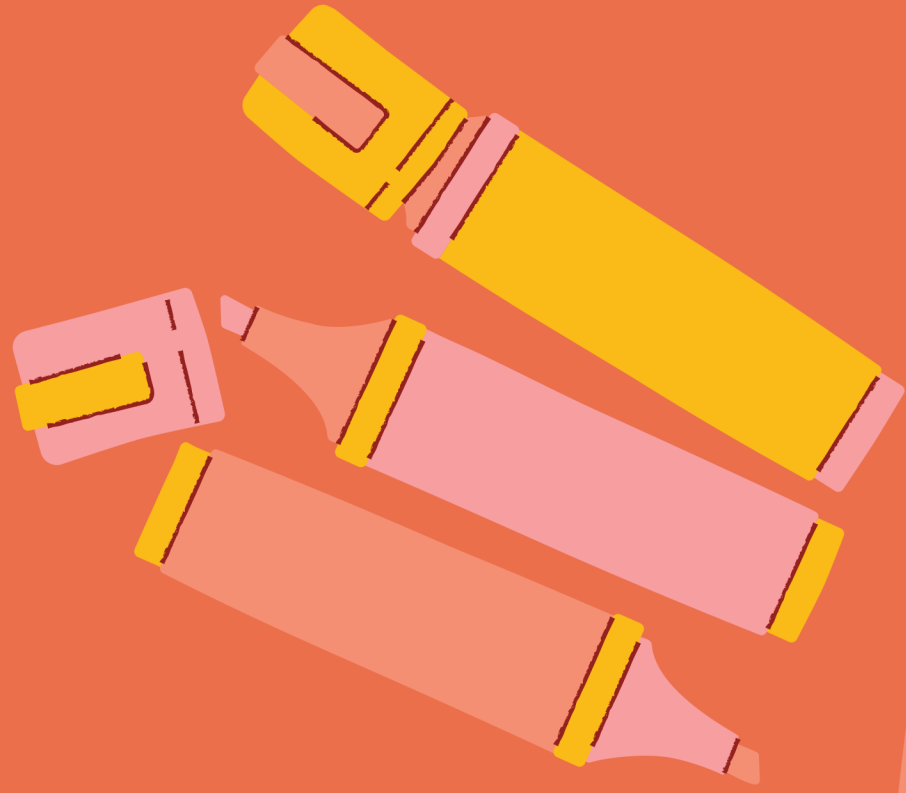




Crafting a challenge statement

THE INNOVATION LAB



WHAT IS A CHALLENGE STATEMENT?

A challenge statement is a preliminary statement to set out the challenge which you want to address.

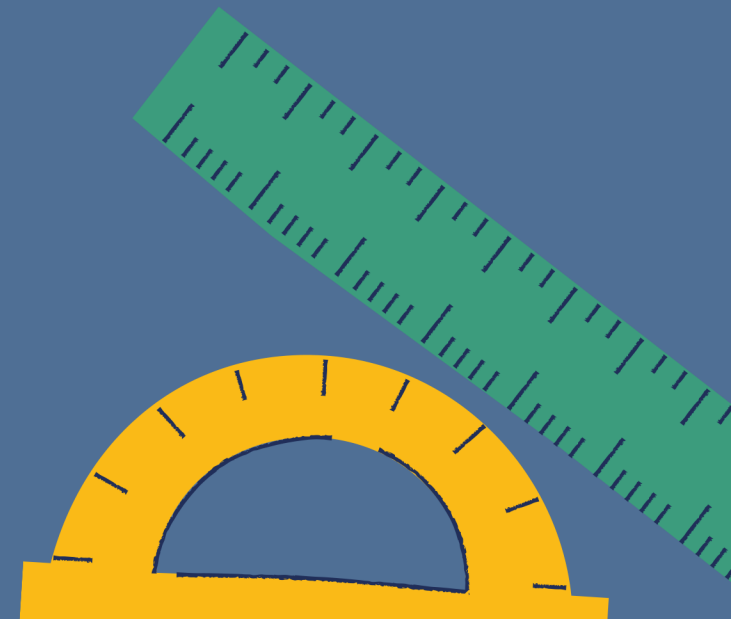
A challenge statement can help you to scale down a complex system challenge by making it 'local' and relevant to you.



The point of this exercise is to help you to identify a challenge that is both broad enough to inspire a wide range of responsive solutions, but also narrow enough so that there are some helpful boundaries.

By creating a challenge statement, you can also clearly articulate the big question of 'why' you need to innovate in the first place.

WHY YOU
SHOULD
CREATE A
CHALLENGE
STATEMENT



THERE ARE 3 KEY PARTS TO A CHALLENGE STATEMENT

WHO

The target audience /
intended user



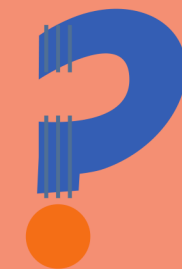
WHAT

The challenge



WHY

Why the challenge (and
innovative solution)
matters



INNOVATION CHALLENGE STATEMENT

We believe...

(State who the target audience is and what the system/community needs are.)

needs a way to...

(What is the issue or risk? Clearly articulate the current situation outcome that you would like to disrupt, mitigate, or alleviate.)

because...

(Why does it matter?
What is the big opportunity?
What are the underlying costs for not addressing this challenge?)

 **CONGRATS!** 

You have completed your innovation challenge
identification statement.